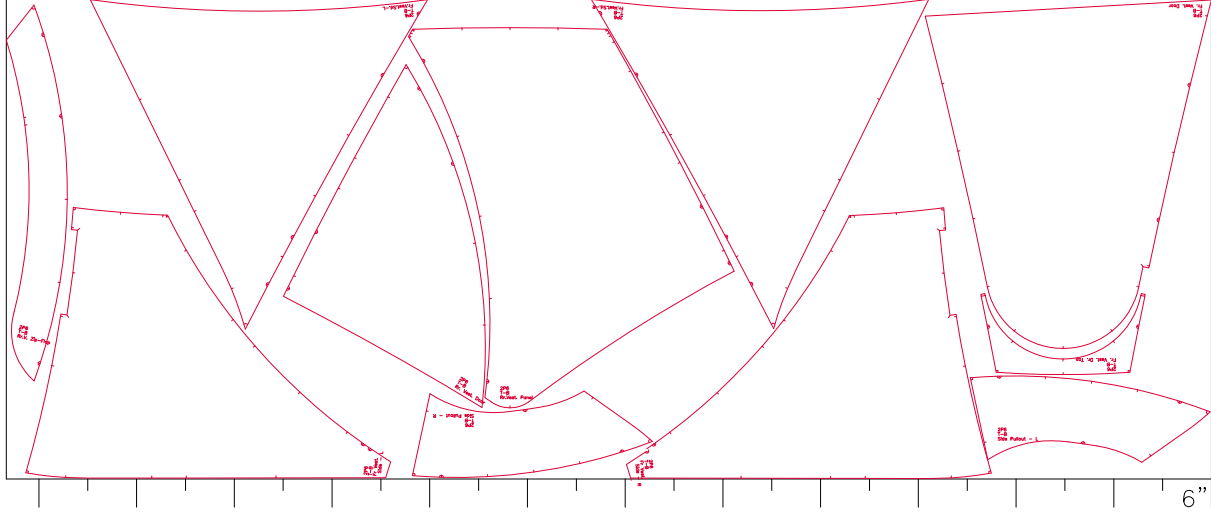
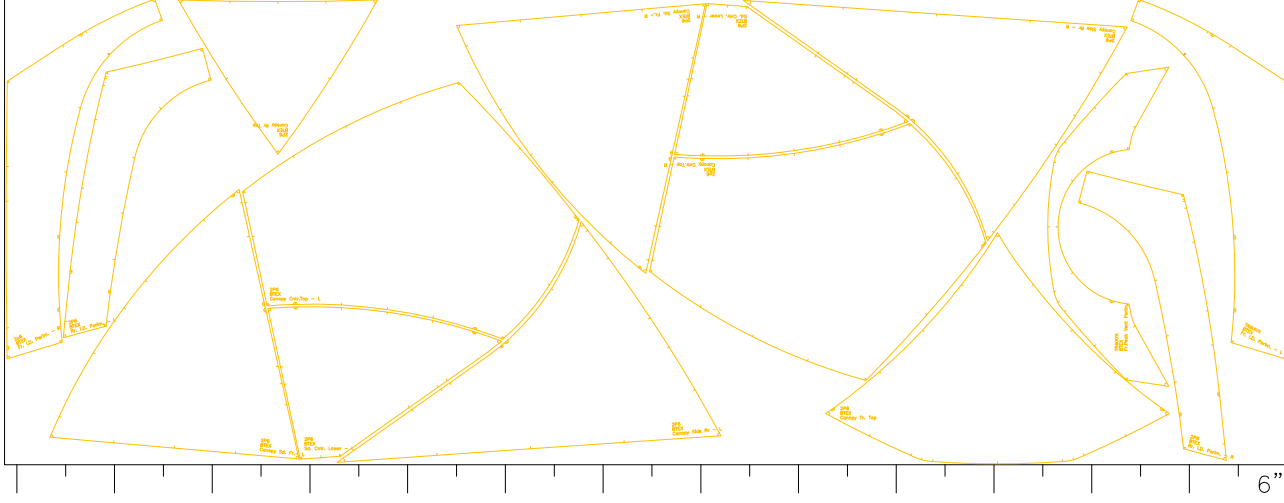


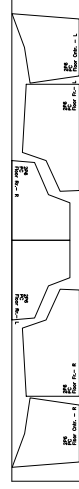
Taff P – Cut at 153" x 59
(Coating up)



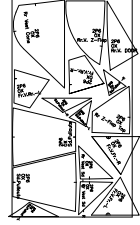
Taff Bu – Cut at 149" x 59
(Coating up)



Bfex – Cut at 158 1/2" x 57 1/2



PackCloth – Cut at 9 X 59 (coating up)

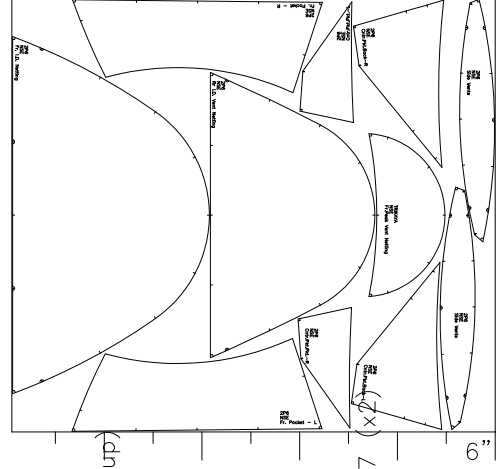


Cut at 15.75 X 27

Oxford (coating up)
incomplete

NOT FINAL

Tambu – 2P6
'97 Layouts
(2P6-97aL.GCD) 8/96



NSE – Cut at 60 1/2" x 53 1/2



Ripstop – Cut at 34" x 59 1/4