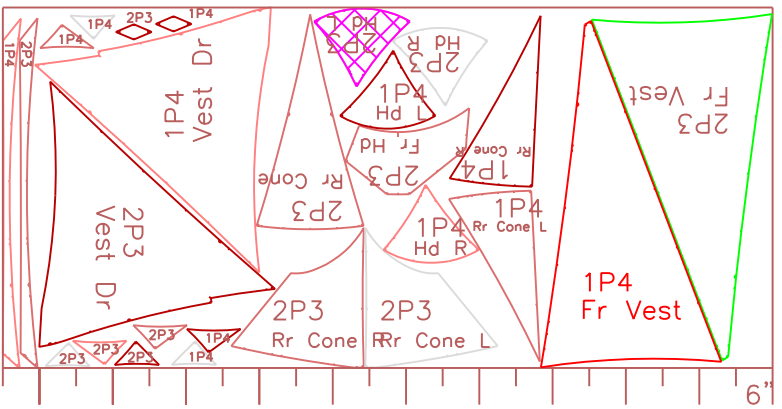
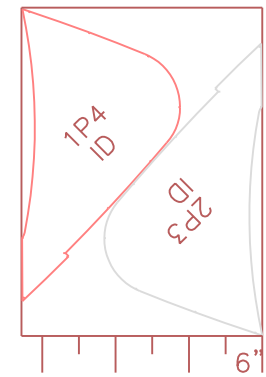


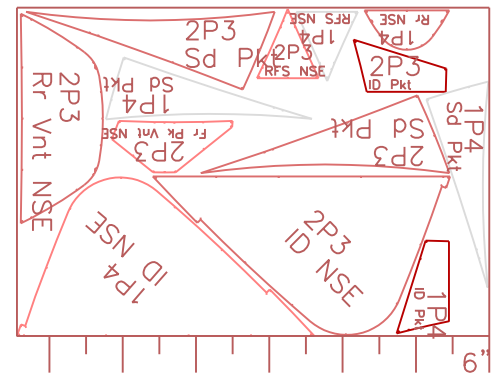
BTex - Cut at 321" x 57 1/4 (R)



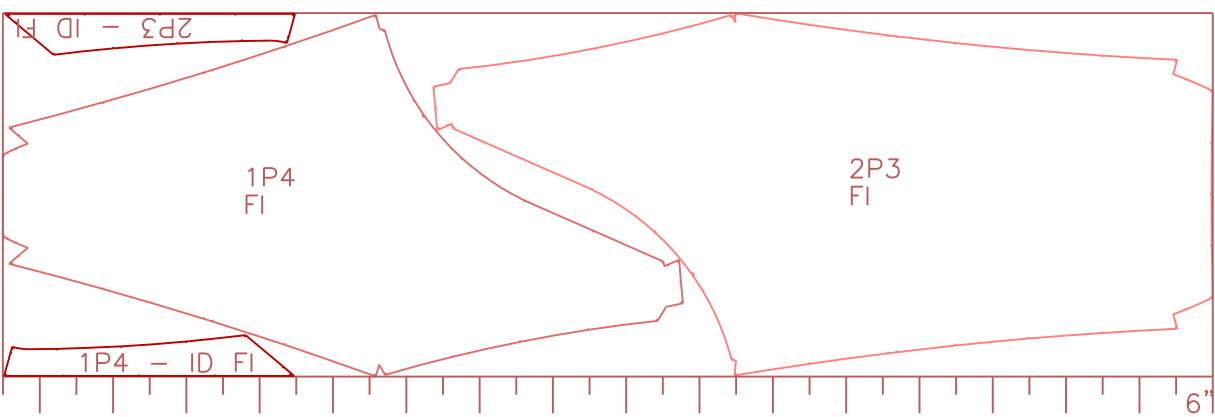
Taff Bu - Cut at 127" x 59 (Coating up)



Ripstop - Cut at 40 1/2" x 59



NSE - Cut at 78" x 53 1/2



Taff P - Cut at 199" x 59 (Coating up)



Cut at 8" x 59 (Coating up)

PackCloth



Cut at 17 1/2" x 59 (Coating up)

Oxford