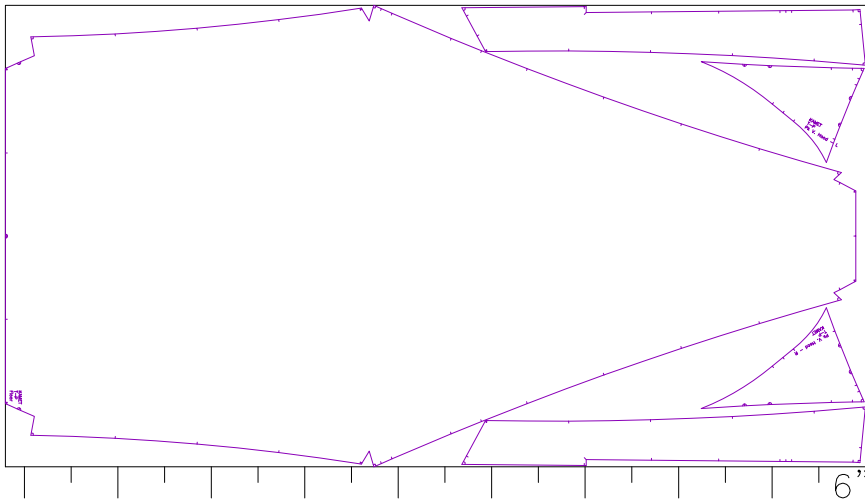
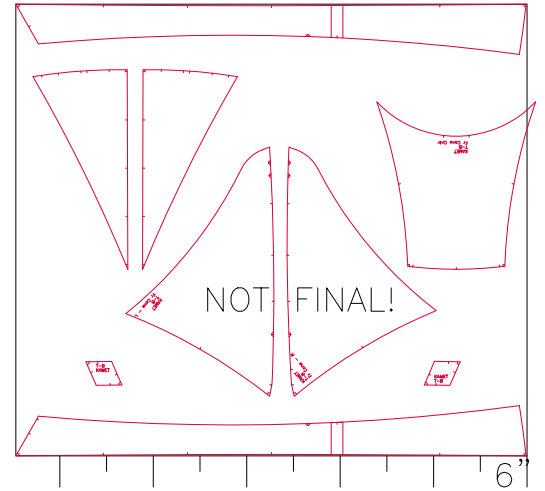


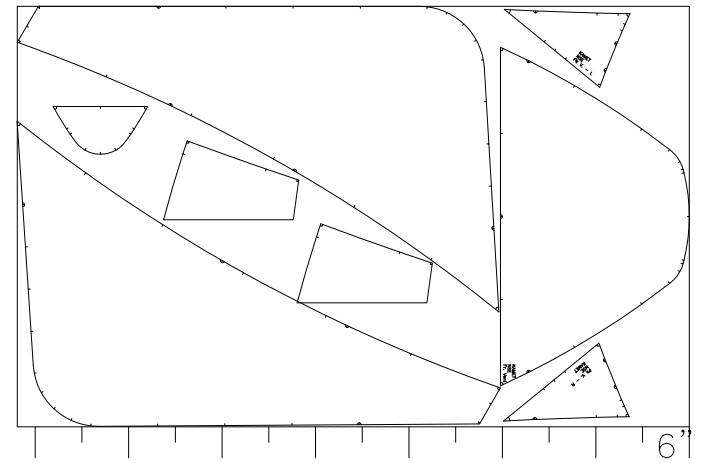
BTex - Cut at 186" x 57 1/4" (Coating up; 1/2 layers, mi)



Taff-P - Cut at 112" x 59 1/4" (Coating up) NOT FINAL



RS - Cut at 19" x 59 1/2" (1/2 # layers; dbl-up pages)

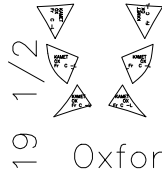
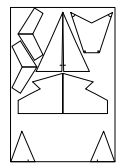
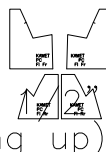


NSE - Cut at 87 1/2" x 53" (Coating up) NOT FINAL



PackCloth - Cut at 8 x 18" (/3) (Coating up)

NOT FINAL



Oxford - Cut at 12" x 59" (/3) (Coating up)

Kamet - 2P2Ba '97 Layout NOT FINAL !!!

(2P2b97-L.GCD) 7/96