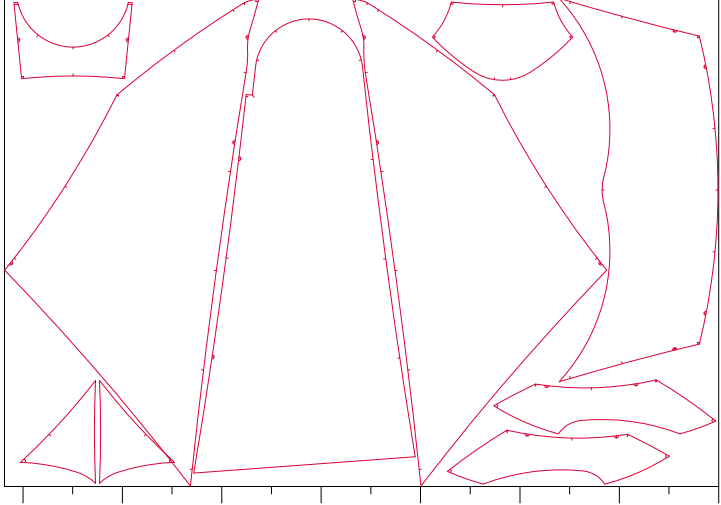
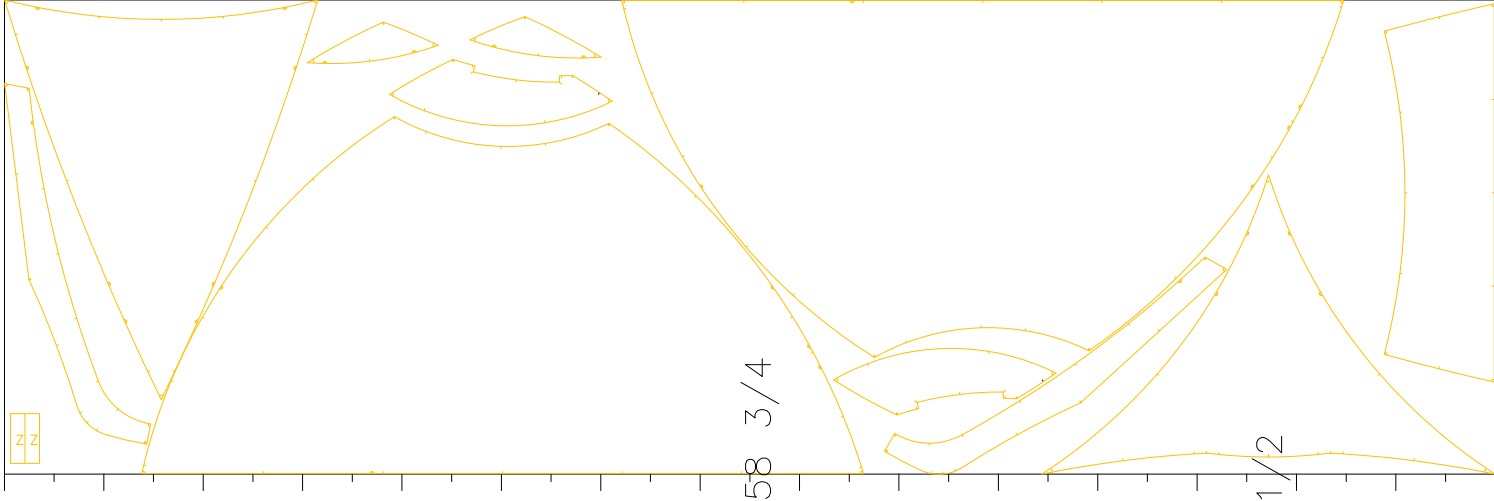


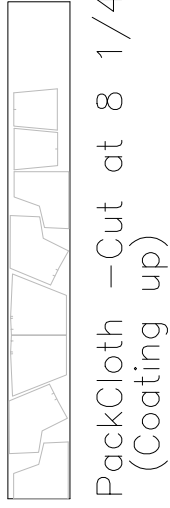
Taff-P - Cut at 104 1/4" x 59
(Coating up)



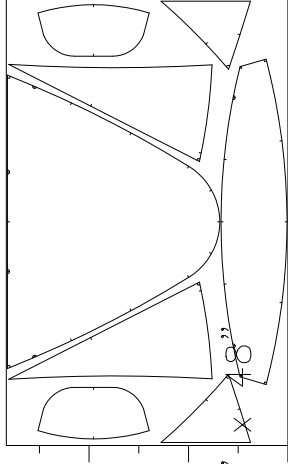
Taff-Bu - Cut at 87" x 58 3/4
(Coating up)



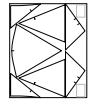
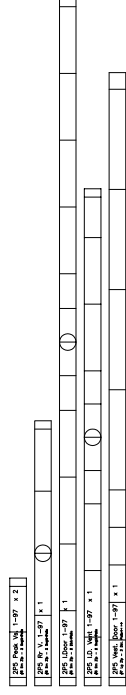
BTex - Cut at 181" x 58 1/2
(Ripstop up)



PackCloth - Cut at 8 1/4" x 48
(Coating up)

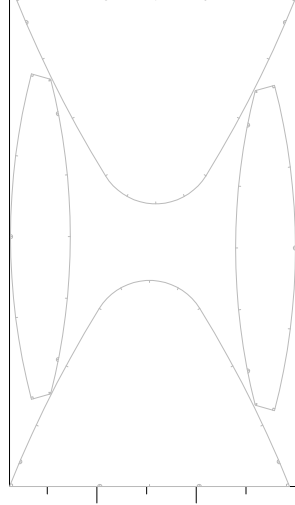


NSE - Cut at 35" x 53 1/2



11 1/2

Oxford (Coating up)
Cut at 10 1/4" x 59(5)



RS - Cut at 35 1/2" x 58
(lay 1/2 #, dbl up patterns)

Kaja - 2P5
'97 Layout
(2P5-97-L.GCD)