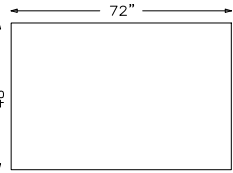
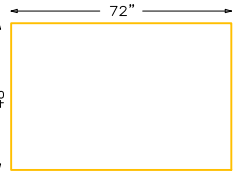


SEWTABLE EXTN.

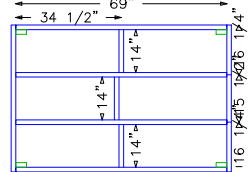
Top Surface 1/8" Hardboard Tempered



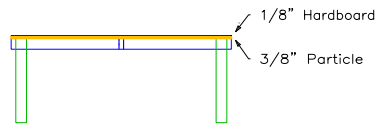
Top Sub-Surface 3/8" Particle Board



Frame 2' x 4's

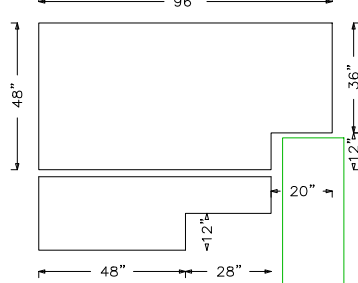


- 2" X 4"
- 14" X 3
- 27 1/2" X 4
- 48" X 2
- 69" X 4
- Lag Bolts, W, N
- Screws - Lg
- Screws - Sm
- 4" C-Clamp x 2

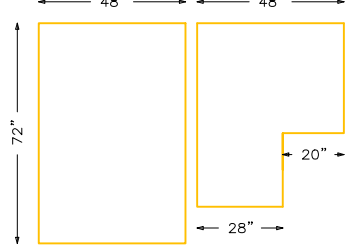


SEWTABLE

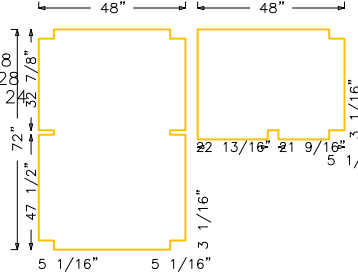
Top Surface 1/8" Hardboard Tempered



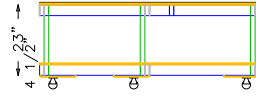
Top Sub-Surface 3/8" Particle Board



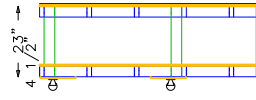
Lower Surface 3/8" Particle Board



End

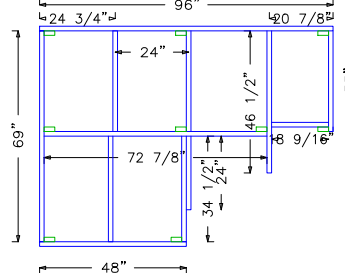


Front

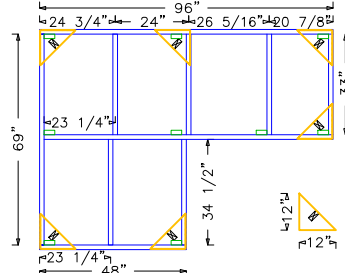


- 1/8" Hardboard
- 3/8" Particle
- 3/8" Particle

Top Frame 2' x 4's



Lower Frame 2' x 4's



- 2" x 4" Pine
- 23" x 7

- 2" x 4" Pine
- 18 5/8" x 1
- 33" x 3
- 34 1/2" x 2
- 46 1/2" x 1
- 48" x 1
- 69" x 1
- 72 7/8" x 1
- 96" x 1

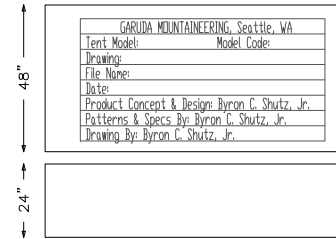
- Screws - Lg 48
- Screws - Sm 32

- 2" x 4" Pine
- 33" x 4
- 34 1/2" x 2
- 48" x 1
- 69" x 1
- 94 1/2" x 1
- 96" x 1

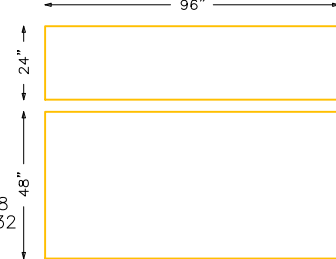
- 1/2" 4' x 8' Plywood
- Lag Bolt, W, N 56
- Screws - Lg 32
- Screws - Sm 30
- Bolt, W, N 56

CUTTING TABLE UNIT

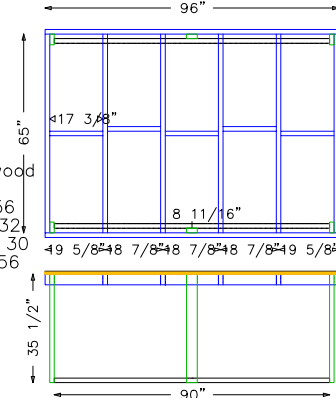
Top Surface 1/8" Hardboard Tempered



Top Sub-Surface 3/8" Particle Board



Frame 2' x 4's



- 2" x 4"
- 17 3/8" x 5
- 65" x 6
- 96" x 2
- 35 1/2" x 6
- 2" x 2" x 8' 2
- 1/8" 8'x4' HB x 1
- 3/8" 8'x4' PB x 1
- Screws - Lg 48
- Screws - Sm 40
- Lag Bolts, W, N 12

- 1/8" Hardboard
- 3/8" Particle

