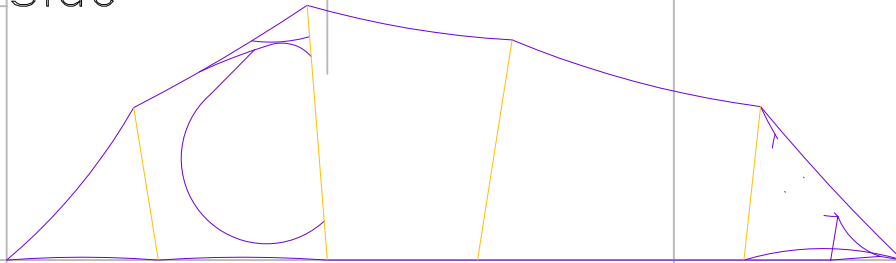


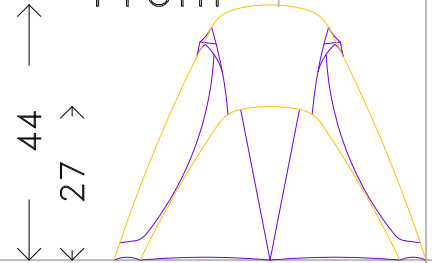
# GARUDA

New for '94

Side

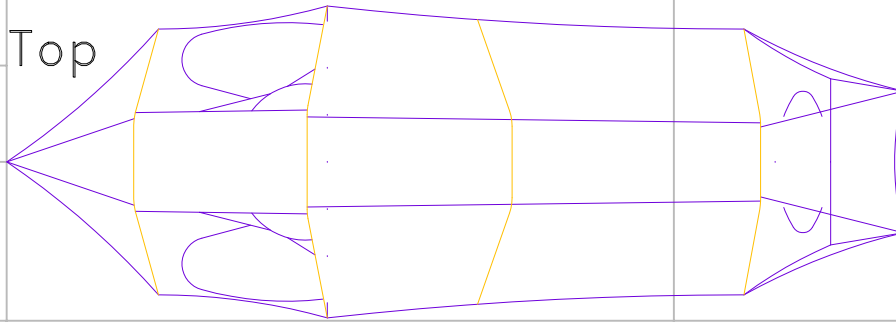


Front

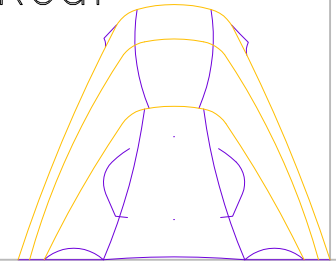


← 26 × 29 × 86 →

Top



Rear



← 153 →

← 46  
54 →

# Emeishan

- ✓ Full-featured shelter for two and all their gear
- ✓ Integrated vestibule with 2 doors and steeply raked vents
- ✓ Full Byro<sup>TM</sup> inner door backed with No-See-Um Netting
- ✓ Large zippered rear vent and adjustable cone
- ✓ Minimum 3 main anchor points
- ✓ 6 additional anchors and 8 tie-downs for severe conditions
- ✓ 4 large netting storage pockets and overhead drying rack

Capacity: 2 + lots of gear

Rating: 4-season mountaineering

Floor Area: 29 sq. ft.

Vest. Area: 14 sq. ft.

Weight: 5 lb. 14 oz. (tent, poles, webs, & 3 Easton stakes)